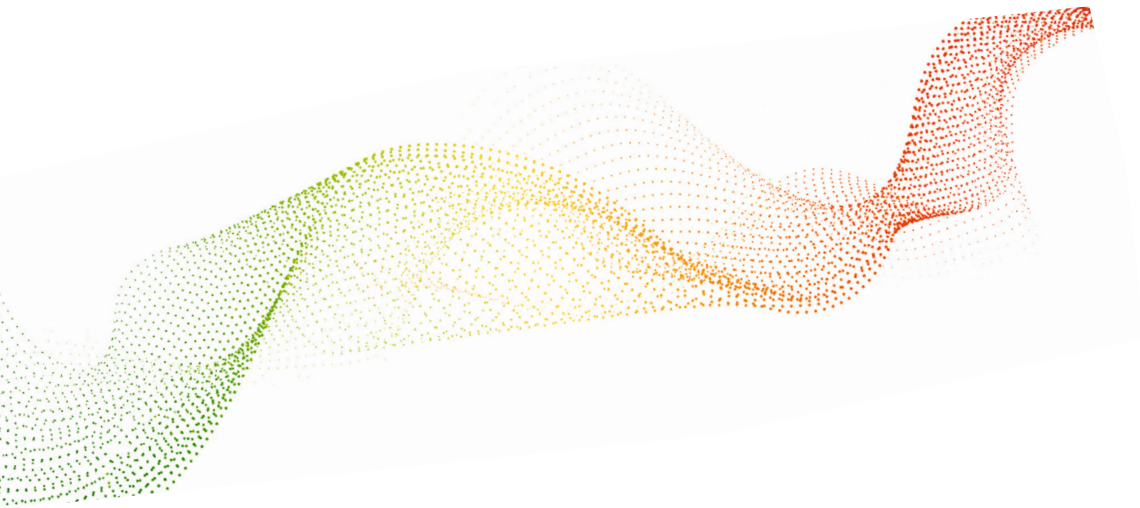


Bovine



Laparoscopy / Thoracoscopy

Equipment for laparoscopic repositioning and fixation of abomasal displacement
(acc. to Dr. Janowitz), accessories for standing upright position (acc. to Dr. Christiansen)



WIRELESS Video- Laparoscopy

in Cattle

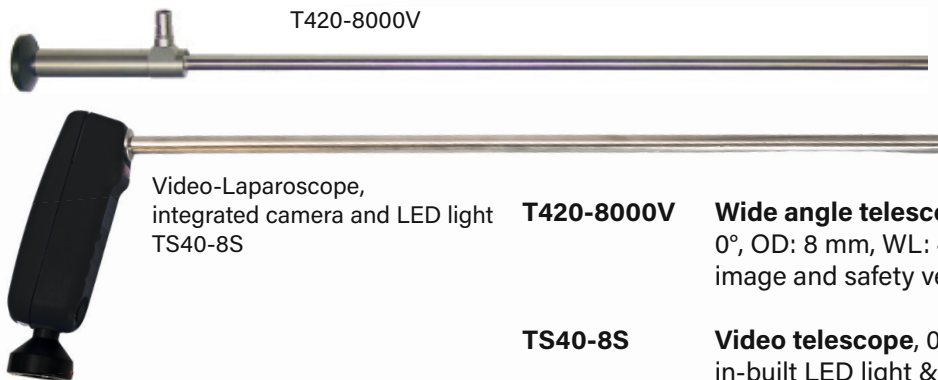


118 2025



Laparoscopy

Telescope, Trocars and Accessories



T420-8000V

Video-Laparoscope,
integrated camera and LED light
TS40-8S

T420-8000V

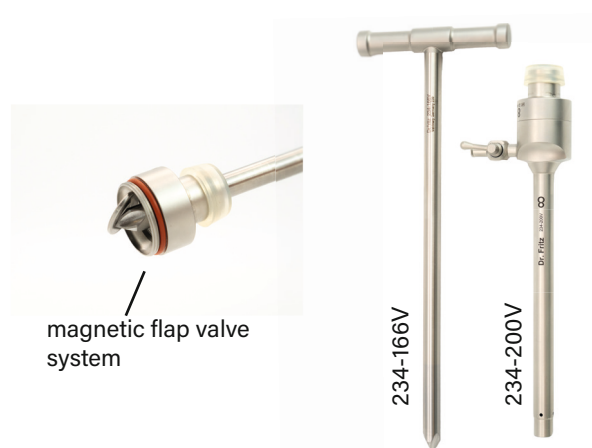
Wide angle telescope,

0°, OD: 8 mm, WL: 46 cm. large
image and safety version, for large animal practices

TS40-8S

Video telescope, 0°, wireless, OD: 8 mm, WL: 40 cm,
in-built LED light & 5,8Ghz sender, rechargeable
Li battery, fully immersible, resolution: 720x640pxs,
robust veterinary version, set consisting of:
video laparoscope (TS40-8), charger(TV27-NET)

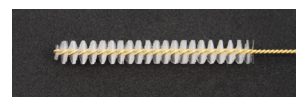
- 234-200V** **Cannula only,** magnetic valve, ID: 8mm,
WL:12cm, stainless steel, stopcock
- 234-166V** **Trocar, only,** cork screw handle, special
sharp tip, for cannulas ID: 8mm, WL: 12cm
- 231-201V** **Cannula only,** magnetic valve, ID: 5,5mm,
WL:12cm, stainless steel, stopcock
- 231-166V** **Trocar, only,** cork screw handle, special
sharp tip, for cannulas ID: 5,5mm, WL: 12cm



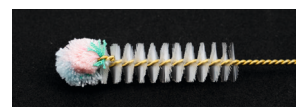
magnetic flap valve
system

Accessories:

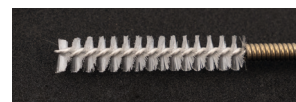
- 234-211** **Spare sealing caps,** for trocar cannula 8 mm, p. of 10 pcs.
- 231-211** **Spare sealing caps,** for trocar cannula 5,5 mm, p. of 10 pcs.
- 230-215** **Spare magnetic valve flap** 8/10/11/12/13 mm, p. of 2 pcs.
- 231-215** **Spare magnetic valve flap** 5,5 mm, p. of 2 pcs.
- DE-6-21** **Cleaning brush for tubes,** size: 4 to 7 mm, 20 cm
- DE-9-25** **Cleaning brush for tubes,** size: 7 to 10 mm, 25 cm
- DE-6-102** **Cleaning brush, flexible,** for tubes, size: 5 to 8 mm, 70 cm



DE-6-21



DE-9-25



DE-6-102

Light sources for field practice

- LED-8-35** **LED light handle, accu power set,**
comp.to Fritz/Wolf, handle water resistant,
consisting of:
handle only (LED-8-35G), charger (LED-8-35LA),
Li accu block 3,7Vx 1Ah (LED-8-35B)



LED-8-35



Laparoscopy

Instruments & Accessories

Safety toggle

- Robust and break resistant(material)
- 90 cmdouble suture material
- With markings along the suture
- Increased stiffness of suture material to assist placement in abdomen

LO-40-04 Safety toggle pin acc. to Dr. Janowitz, for laparoscopic abomasal fixation, 5 pcs.



Needle, puncture system

L-33-218 Palpation probe and puncture cannula,
OD 5 mm, 33 cm

L-33-218



TR-40-350 Toggle placing trocar set
acc to Janowitz,
OD: 5 mm, WL 35 cm,
consisting of:
cannula only (TR-40),
trocar only (TR-40-3),
obturator (TR-40-35)

TR-40-350



Suture grasping forceps

L-19-757 Suture grasping & preparation forceps
acc. to Dr. Janowitz, long version, OD: 5mm, WL: 46 cm,
cleaning connector

L-19-757



L-19-461 Suture grasping hook acc. to Dr. Meyer, 5 mm, 40 cm





Laparoscopy

Spieker acc. to Christiansen



Repositioning of LDA,
in a standing upright position

Janowitz and Christiansen,
Gießen 2003

TR-78-766 Christiansen-Spieker for large animals

Length: 1m

Consisting of:

- Lancet TR-78-761
- Inner tube only TR-78-762
- Outer tube front part TR-78-763-1
- Grip outer tube TR-78-763-2



TR-78-761 Lancet only

Suitable for Grip outer tube TR-78-762



TR-78-762 Inner tube only

Suitable for lancet TR-78-761



TR-78-763-1 Outer tube, front part only

Suitable for Grip outer tube TR-78-763-2



TR-78-763-2 Grip outer tube only

Suitable for Outer tube front part
TR-78-763-1



TR-13-145 Working trocar

Ø 13mm, WL: 14cm

Consisting of:

- Cannula TR-145
- Sharp trocar TR-13



237-505 Reducer adapter

For trocars

- From Ø 13mm to Ø 10mm





Laparoscopy

Soak basin



DE-10-426

Soak basin for chemical solution disinfection consisting of basin /perforated), tray & cover for basin, size:72,5x20x14 cm

Suction & inflation pump



H140-3S



H150-1-1

H140-3S

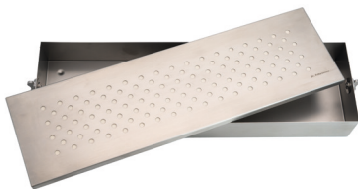
Suction & irrigation pump, soft system, complete with 2 bottles (suction/ water) 1 litre each, tubing set autoclavable, vacuum: 3 L/min, max: 0,4 bar pressure: 4 L/min, max.0.5 bar (400mmHg) incl. transformer 115- 240VAC;50/60Hz

H150-1-1

Inflation pump, small, 4 litre/min silicon tube, LL(m), 3m, 230VAC, 50/60Hz

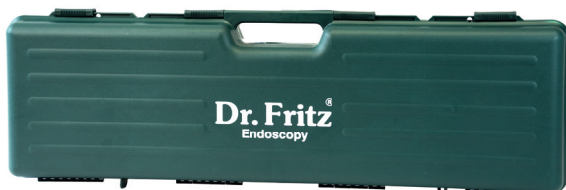
Transportation case and instruments, container

For safe storage of your cold light source, instruments and telescopes



DE4011-48

Sterilizing and storing case, stainless steel, 40x11x6 cm, lid perforated, with textile filter



K-8427-11

Case for storage and transport of telescopes and instruments, 84x27x11 cm,

Y-K-8427-13 Spare inlay for transportation case

type K-8427-11, washable (without picture)



Laparoscopy

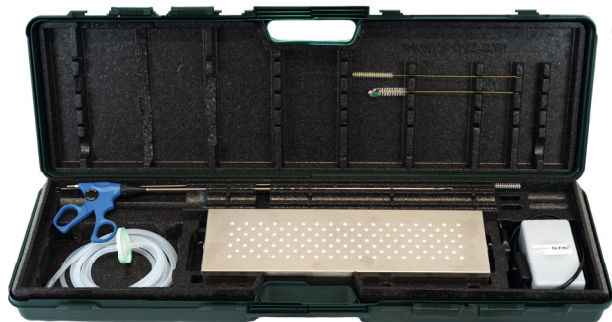
Set for laparoscopic repositioning and fixation of abomasal displacement in cattle acc. to Dr. Janowitz

Sets with lights handle

This set allows the veterinary surgeon to use a quick, and extremely safe technique with no medication requirements as well as quick recovery of the patient. The basic element in the set is a specially developed robust scope with a length designed specifically for this purpose. Instruments are specifically designed for use in large animal field situations and stored in a practical transport case to guarantee a long life. In research programs it emerged that the traditional toggle system often offered inadequate strength and resulted in either rupture of the suture material or breakage of the plastic toggle material. This has led to the development of a new safety toggle with a 90 cm long break safe double suture.

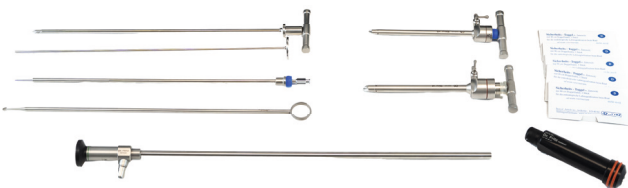
Basic set (SET-LAB-231)

Set for endoscopic LDA/RDA repositioning



▪ Removeable, washable inlay

▪ Case bottom can also be used as disinfection basin



2-step technique (Janowitz-Technik)

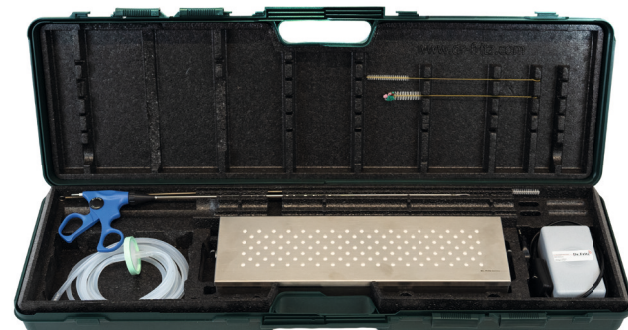
Basic set consisting of:

- Special cattle telescope, Ø 8mm, 0°
- Trocars and trocar cannulas Ø 8mm & 5mm
- Trocars and trocar cannulas Ø 5mm
- Palpation probe and puncture needle
- Abomasal puncture trocar set
- Suture grasping forceps, long
- Suture grasping hook acc.to Meyer
- Safety toggle pins, 5 pieces
- Sterilizing and storage tray
- Inflation pump
- Cleaning brushes
- LED light handle, accu
- Transportation case, can also be used as a disinfection basin

Set also available with video endoscope - SET-LAB-V41

Large set (SET-LAB-232)

Basic set + Spieker acc. to Christiansen



2-step + 1-step technique (Janowitz- + Christiansen Technik)

Large set consisting of:

- Basic set
- Trocar and cannula Ø 13mm, large
- Spieker acc. to Christiansen complete

Set also available with video endoscope - SET-LAB-V42



Laparoscopy

Set for laparoscopic repositioning and fixation of
abomasal displacement in cattle acc. to Dr. Janowitz

Eco Set (SET-LAB-233)



1-step technique (only standing upright position)

Set „Eco“ consisting of:

- Special cattle telescope Ø 8mm, 0°
- Trocar and trocar cannula Ø 8mm
- Abomasal puncture trocar cannula, and blunt obturator
- Safety toggle pins (5pcs)
- LED light handle, battery
- Trocar and cannula, 13mm, large
- Spieker acc.to Christiansen
- Transportation case, can also be used as a disinfection basin

Set also available with video endoscope - SET-LAB-V43

All sets also available with video endoscope

Video „Basic“ set SET-LAB-V41

Video „Large“ set SET-LAB-V42

Video „Eco“ set SET-LAB-V43



Transmission

